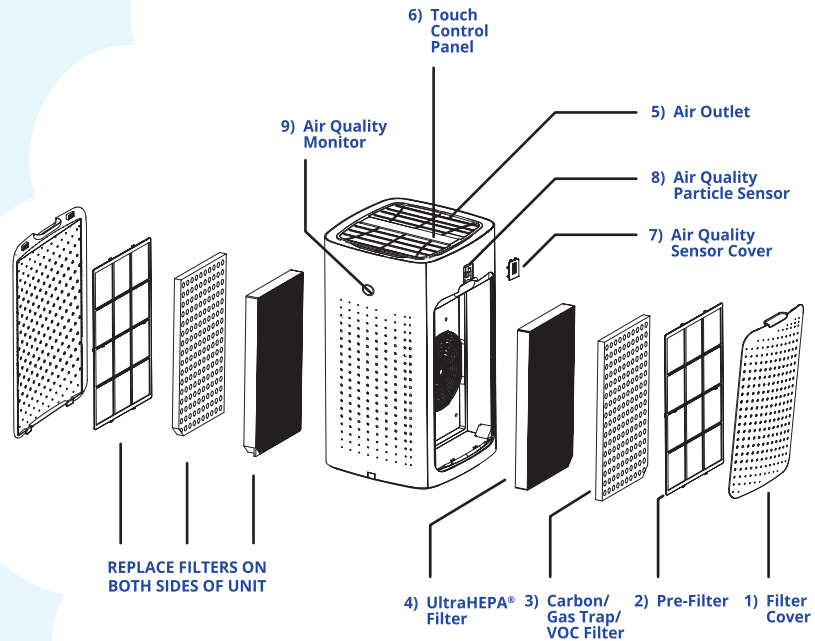


Getting to Know the AirDoctor 5500 Air Purifier

MAIN PARTS

1. Filter Cover (2 ea.)
2. Pre-Filter (2 ea.)
3. Carbon/Gas Trap/VOC Filter (2 ea.)
4. UltraHEPA® Filter (2 ea.)
5. Air-Outlet
6. Touch Control Panel
7. Air Quality Sensor Cover
8. Air Quality Particle Sensor
9. Air Quality Monitor: The display will change color depending on air quality.



INSIDE PANEL

AIRDoctor®
BY IDEAL LIVING

AirDoctorPro.com

AIRDoctor®
BY IDEAL LIVING

In. The Doctor is In. The Doctor is In. The Doctor is In. The Doctor is In. The Doctor is In. The Doctor is In. The Doctor is In. The Doctor is In. The Doctor is In. The Doctor is In.



Need Help?

Contact us. We want to help. | airdoctorpro.com/support

Email: info@airdoctorpro.com

Toll-Free: 1.800.221.2515

Support Hours

Monday-Friday, 7am-4pm PST/PDT

Saturday, 7am-3pm PST/PDT

03.23.R1



Follow Us! @AirDoctorPro

BACK COVER

QUICK START GUIDE
AD5500 / AIR PURIFIER

FRONT COVER

AD5500_Quick_Start_Guide_03.23_R1 / 02.28.23

Fold / Trim : 5" W x 7" H (Tri-Fold)

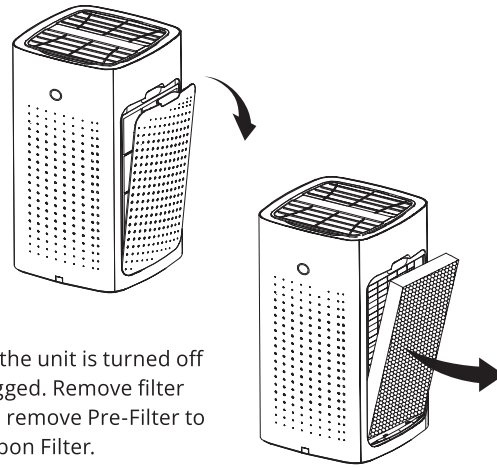
Flat: 15" W x 7" H with .125 bleeds all sides

Color: 4C Process

WARNING!

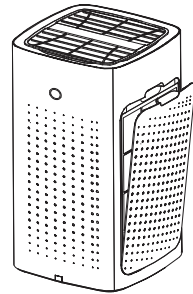
READ BEFORE Operating the AirDoctor 5500 Air Purifier

Before using your AirDoctor®, you **MUST REMOVE** Carbon Filters from their protective bags.



Make sure the unit is turned off and unplugged. Remove filter cover, then remove Pre-Filter to access Carbon Filter.

Remove protective bag from Carbon Filter, then reinstall.



Reinstall Pre-Filter, then filter cover. Repeat on the opposite side. Now, let's get purifying!

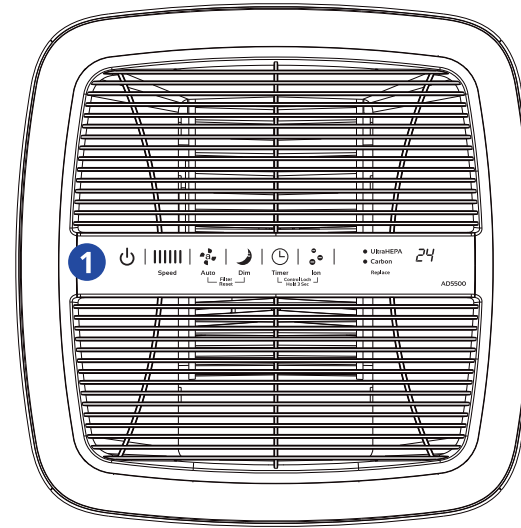
Plug the unit into an electrical outlet. The unit will be ready to run. Read the following directions to select desired settings.

The importance of Genuine AirDoctor Replacement Filters!


Genuine AirDoctor replacement filters are guaranteed by AirDoctor and independently tested to remove dangerous airborne contaminants. Generic (third-party) aftermarket filters are of dubious quality and are not tested for effectiveness and are not certified to work with AirDoctor to maintain the Energy Star and CARB certification. AirDoctor has tested several generic filters that do not even meet the minimum HEPA standard. For air quality you can trust, and to maintain the optimal performance you depend on from AirDoctor, always use genuine AirDoctor replacement filters.

Warning: The use of generic, third-party replacement filters can damage your AirDoctor purifier and void your warranty.

Control Panel



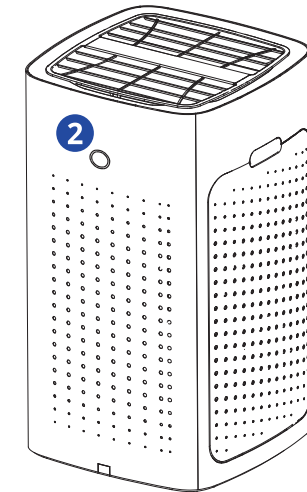
1 Power Control

As soon as you press the power button , the AirDoctor will start in the **Auto** mode. Once the Auto mode has been activated, it will start up in the high-speed mode, then the sensor will start to detect the amount of particulate matter in the air. As the particles are detected, the AirDoctor will automatically adjust to the purification speed (fan speed) that is appropriate to the particulate contamination in the room.

In most cases we recommend that you leave the AirDoctor in the Auto mode. For other purification modes, see User Manual.

**FOR MAXIMUM EFFECTIVENESS,
RUN 24/7 IN AUTO MODE**

Air Quality Monitor



2 Air Quality Monitor

The AirDoctor comes with an Air Quality Monitor that continuously monitors the quality of air in a room. The LED light located on the front will light up, according to the air quality. The Air Quality Monitor is able to show three air quality levels.

BLUE = Good air quality

ORANGE = Moderate air quality

RED = Poor air quality

You can choose to set the AirDoctor to **Auto**. This will enable the AirDoctor to adjust the fan speed according to the air quality. In **Auto** mode, the fan speed will be adjusted as follows:

Good Air Quality = Speed 1 or 2, depending on the air quality level

Moderate Air Quality = Speed 3 or 4, depending on the air quality level

Poor Air Quality = Speed 5 or 6, depending on the air quality level

Please Note: The blue light indicates that AirDoctor is maintaining healthy air quality. We recommend that you keep the unit in Auto mode as it will automatically adjust to the purification needs of the room.

INSIDE SPREAD