

# AIRDoctor®

**USER MANUAL**  
AD5000H / AIR PURIFIER



# AIRDoctor®

AIRDOCTORPRO.COM



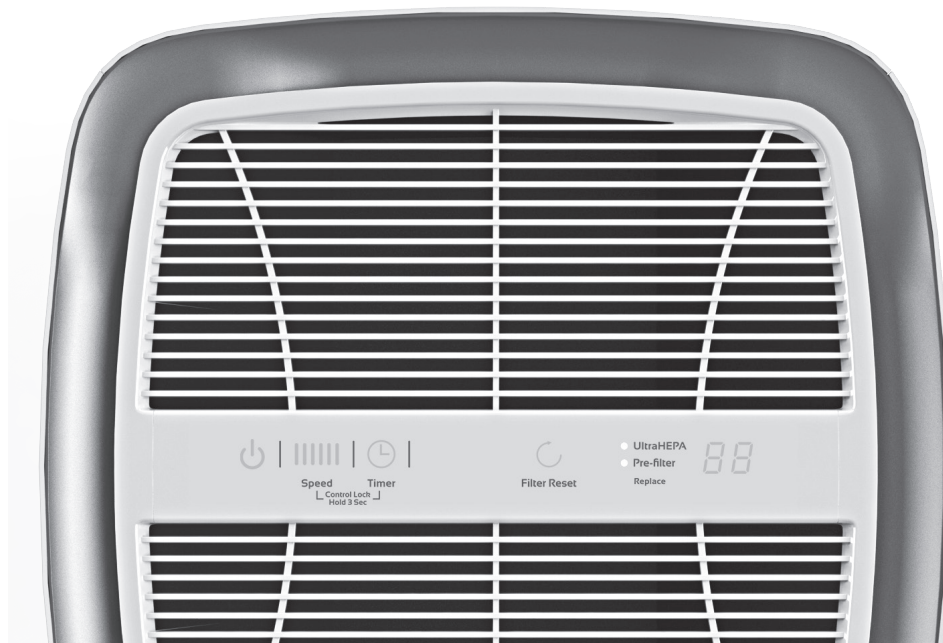
# AIRDOCTOR®

## THANK YOU

Congratulations on purchasing the AirDoctor AD5000H Professional Air Purifier and your commitment to controlling the quality of your indoor air.

With the AirDoctor AD5000H Professional Air Purifier, we provide UltraHEPA® filtration to purify the air and remove air borne particulate matter. Get ready to experience cleaner air!

***PLEASE NOTE: It is crucial that you read and follow all the instructions and safety warnings in this manual for optimal performance of your air purifier and your health and safety.***



## TABLE OF CONTENTS

SAFETY INSTRUCTIONS	2
PRODUCT BENEFITS	3
KNOWING YOUR AIRDOCTOR AIR PURIFIER	4
Main Parts	4
PROPER USAGE	5
OPERATING YOUR AIRDOCTOR AIR PURIFIER	6
Control Panel	6
Control Lock Feature	7
MAINTENANCE	8
Maintaining the AirDoctor Air Purifier	8
TROUBLE-SHOOTING	9
CUSTOMER SERVICE CONTACT INFORMATION	10
ONE-YEAR LIMITED WARRANTY	10
ARBITRATION AGREEMENT	11

## SAFETY INSTRUCTIONS

### WARNING: RISK OF ELECTRIC SHOCK

Safety precautions should always be used when operating this or any electrical appliance. Decrease the risk of electrocution, electric shock, injury or fire by reading and following all the warnings below.

### CAUTION: HIGH VOLTAGE!

This equipment should be inspected frequently and collected dirt removed from it regularly to prevent excessive accumulation that may result in flashover or a risk of fire.

Use this product only as described in this AirDoctor Professional Air Purifier owner's guide. To reduce the risk of electric shock, do not attempt to service the product in any way other than in the manner described in the "Maintenance" section of this guide.

- ⦿ Read all instructions before operating the AirDoctor Professional Air Purifier.
- ⦿ This product operates at 120V AC, 60Hz only.
- ⦿ Do not run the power cord under carpets or cover with throw rugs.
- ⦿ Do not operate the product in a greasy environment such as in the kitchen. This product is not intended to filter oil or grease from air.
- ⦿ Do not use the AirDoctor Professional Air Purifier in bathrooms, near sinks or other wet & humid environments, near fireplaces or in areas where flammable or combustible vapors or products may exist.
- ⦿ Always unplug the power cord from the electrical outlet when the purifier is not in use, before cleaning, inserting or removing parts or before moving to another location.
- ⦿ Never run the air purifier unless it is fully assembled.
- ⦿ To reduce the risk of electric shock, this product has a polarized plug (one blade is wider than the other). This plug will fit into a polarized outlet only one way. If the plug does not fit into the outlet, contact qualified service personnel to install the proper outlet. Do not alter the plug in any way.
- ⦿ Always turn off all controls before unplugging the AirDoctor Professional Air Purifier from outlet.
- ⦿ Attempting to service the AirDoctor Professional Air Purifier in any way not described in this owner's guide will void the warranty and could cause serious personal injury to the user and/or result in considerable damage to the unit.
- ⦿ Do not place the cord near a heated surface.
- ⦿ Never operate the AirDoctor Professional Air Purifier if the plug or cord is damaged or appears damaged. Only qualified service personnel should replace a damaged power cord.
- ⦿ Never use the power cord to pick up, carry, drag, pull or lift the AirDoctor Professional Air Purifier. Do not pull the cord against or around sharp corners and edges. This could result in injury to the user or damage to the cord.
- ⦿ Always remove the plug from its power outlet by holding onto the plug itself and pulling gently. Never pull on the cord itself to unplug it from its power outlet.
- ⦿ Use care when operating the AirDoctor Professional Air Purifier by keeping all foreign objects, fingers and other body parts, hair, loose clothing and jewelry away from openings.
- ⦿ Never touch the AirDoctor Professional Air Purifier or its plug when your hands are wet.
- ⦿ The AirDoctor Professional Air Purifier is an electrical appliance. Adult supervision is required when operating around children.

## PRODUCT BENEFITS

### THE REVOLUTIONARY AIRDOCTOR PROFESSIONAL AIR PURIFIER CLEANS AIR WITH ULTRAHEPA® FILTRATION.

The AirDoctor Professional Air Purifier boasts many great features:

- ⦿ UltraHEPA® filter removes microscopic particles from the air.
- ⦿ MERV 4, Pleated Pre-Filter removes dust & pollen from the air and extends the life of the UltraHEPA® filter.
- ⦿ Powerful and quiet fan has 6 speed settings so you can select the desired cleaning level.
- ⦿ A 24 hour timer to set the time of operation, from 1 hour up to 24 hours.
- ⦿ Filter indicator light.
- ⦿ Low power consumption-energy efficient.

#### Electrical Ratings

- 120 volt / 60 Hz
- Power consumption / 105 watts
- Model AD5000H

#### Replacement Filters

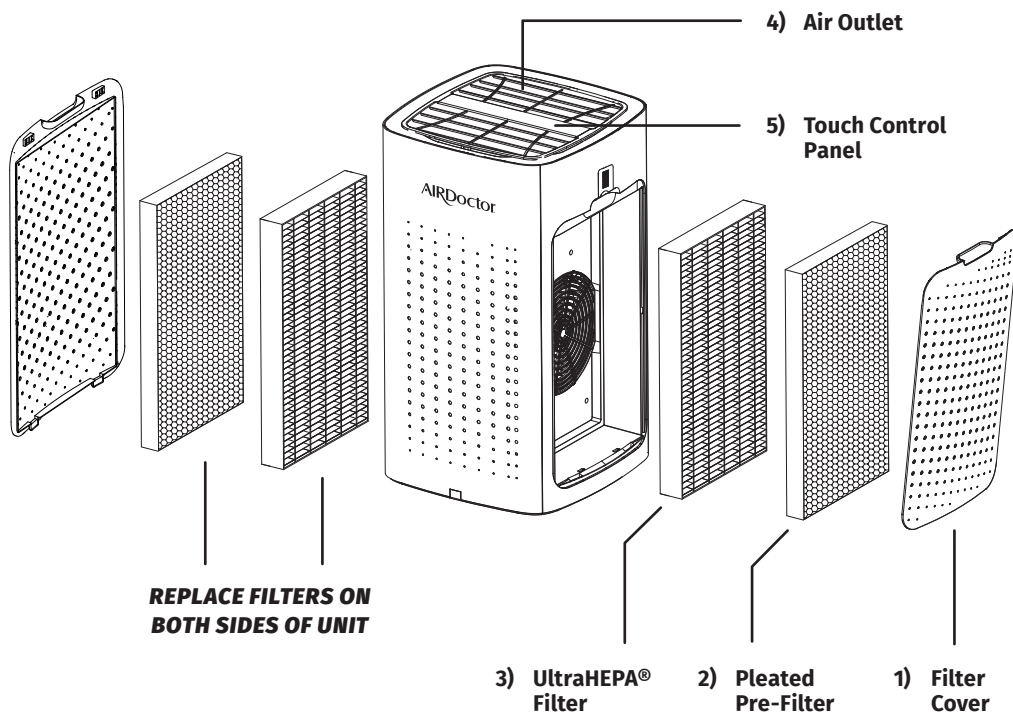
- UltraHEPA® Filter (uses 2) / ADF5005
- Pleated Pre-Filter (uses 2) / ADF5001

To order replacement filters go to [airdoctorpro.com](http://airdoctorpro.com) or call **800.221.2515**.

# KNOWING THE AIRDOCTOR AD5000H AIR PURIFIER

## MAIN PARTS

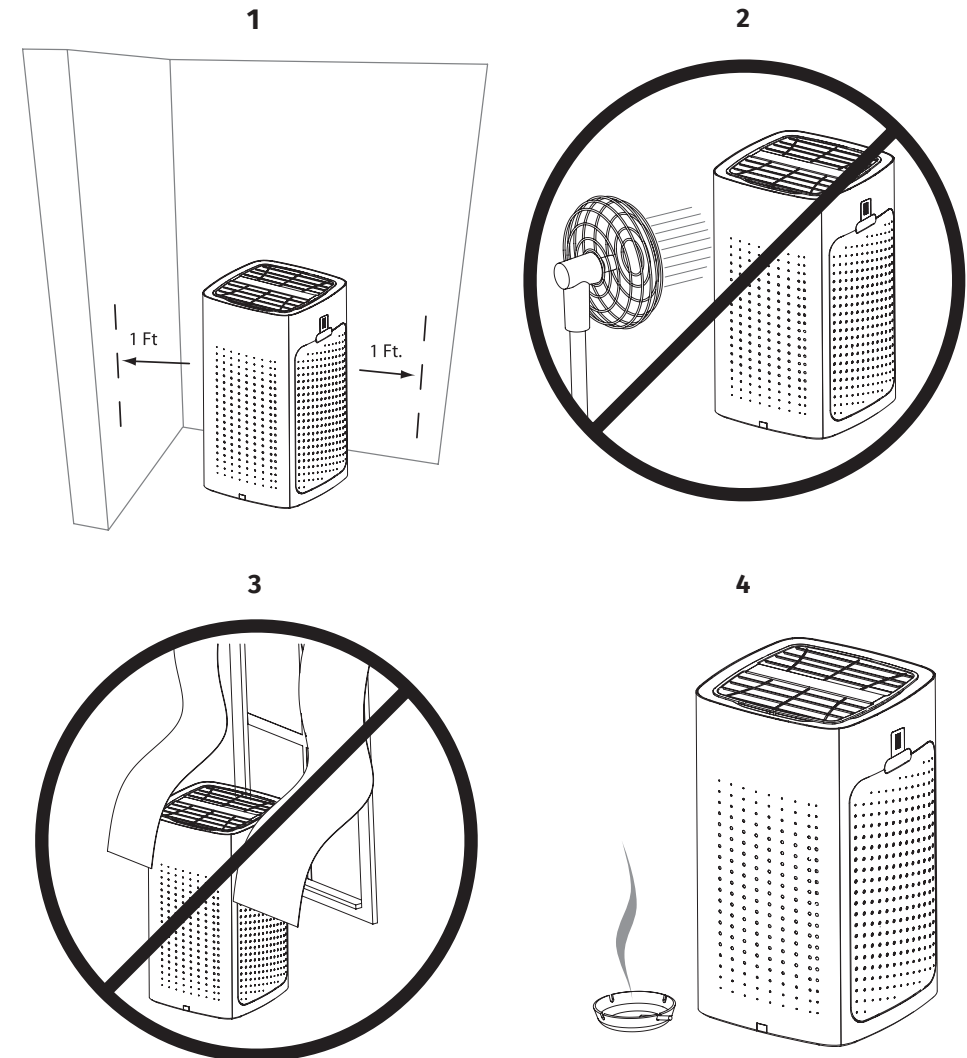
1. Filter Cover (2ea)
2. Pleated Pre-Filter (2ea)
3. UltraHEPA® Filter (2ea)
4. Air-Outlet
5. Touch Control Panel



## PROPER USAGE

**Please note: make sure the UltraHEPA® & Pleated Pre-Filters are properly installed before use.**

1. Keep both sides of the unit more than 1 foot away from a wall.
2. Do not blow air from a fan or air conditioner directly into the air purifier.
3. Do not place the unit where the air inlet or outlet grill could come in contact with curtains or drapery.
4. Place the unit close to the source of air pollution to improve indoor air quality effectively.
5. Always place/keep the unit on the floor/ground.



# OPERATING THE AIRDOCTOR AD5000H AIR PURIFIER


Before first use, remove filters and remove plastic bag from filters, then reinstall filters. Then reinstall front cover.

Plug the unit into an electrical outlet. The unit will be ready to run. Read the following directions to select desired settings.

## CONTROL PANEL



### 1. Power Control

As soon as you press the power button , the AirDoctor will start.

### 2. Fan Speed Control

The AirDoctor has **6** different fan speed settings: speed 1, 2, 3, 4, 5, 6. Each mode has its own vertical indicator light bar which lights up when the setting is chosen. The speed selected determines how rapidly you want to clean the air. Speed 1 is whisper mode, good when you want quiet operation, speed 2, and 3 are great for everyday use. Speed 4 and 5 setting is great for areas with more airborne contaminants (such as excessive smoke, etc). Speed 6 setting is best used for shorter bursts of time when you want to rapidly purify the air.

### 3. Timer Control

The AirDoctor Professional Air Purifier can be programmed to turn off after a preset amount of time. Press the **"TIME"** button to program the timer. Each press will add one hour up to a total of 24 hours. Keeping the button pressed will automatically increase to 24 hours, 1 hour at a time.

### 4. Filter Reset

To reset the filter indicator, **press the Filter Reset button for 3 seconds**. The **CLEAN FILTER** light will flash 3 times and then turn off completely, indicating the unit has been reset.

### 5. Clean Filter Indicator Light

The AirDoctor Clean Filter Indicator Light will turn on each time a filter needs to be replaced.

### 6. 24-Hour Timer Display

# OPERATING THE AIRDOCTOR AD5000H AIR PURIFIER

## CONTROL LOCK FEATURE

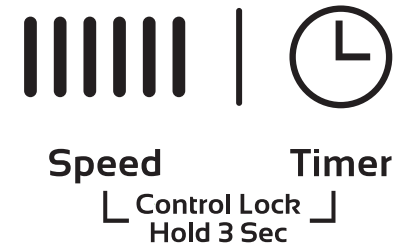
The AirDoctor has a Control Lock feature to prevent a person (child) or a pet from interrupting the running mode by accident. When the control lock feature has been activated, none of the buttons on the control panel will work. The only way to change any setting is to deactivate the control lock feature or to unplug the AirDoctor.

### To activate control lock feature

- Press **"Speed"** and **"Timer"** at the same time for **3 seconds**
- This may be done at anytime while the AirDoctor is running, including on Dim mode

### To deactivate control lock feature

- **"Speed"** and **"Timer"** at the same time for **3 seconds**





# MAINTENANCE

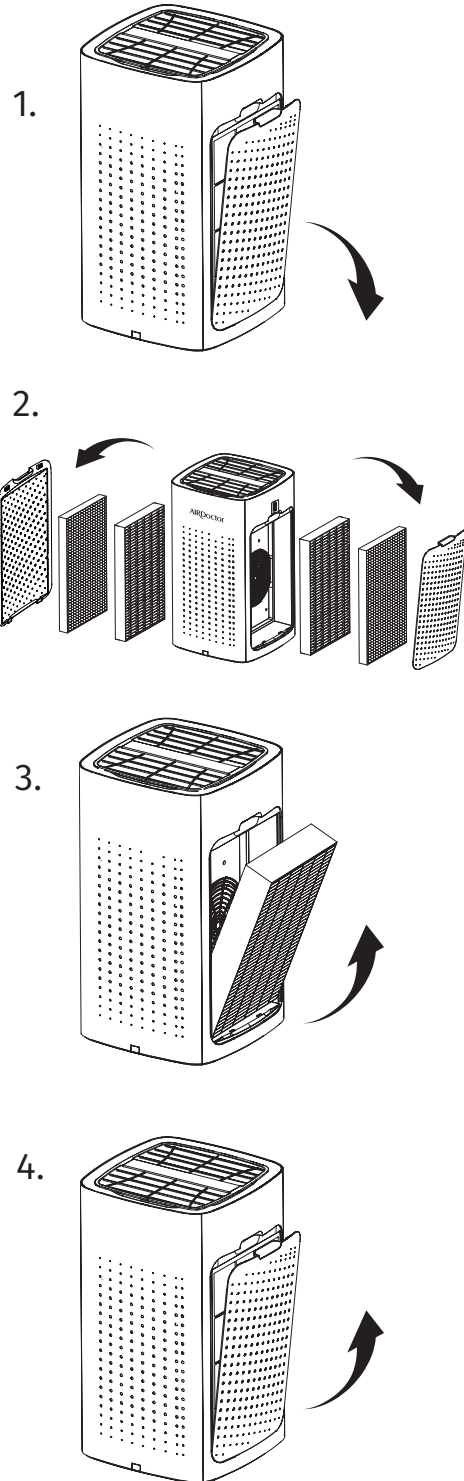
The AirDoctor Professional Air Purifier is almost maintenance free! The Pleated Pre-Filter lasts up to 6 months and our UltraHEPA® Filter lasts up to 12 months, depending on use and environment conditions.

Before replacing the UltraHEPA® or Pleated Pre-Filters of your AirDoctor Professional Air Purifier, turn off and unplug the unit from the electrical outlet and read all safety instructions and important warnings in this owner's manual.

**NOTE: The AirDoctor AD5000H has 2 sets of filters one on either side of the unit. It is very important that you replace the filters on either side the same time to maintain performance and to avoid damaging the unit**

## REPLACING THE ULTRAHEPA® & PLEATED PRE-FILTER FILTERS

1. Make sure the unit is turned off and unplugged. With the front of the unit facing forward, pull the lid towards you at the upper end as shown and remove the front cover.
2. Remove the UltraHEPA® and Pleated Pre-Filters by lifting and pulling the tabs on both sides of the filters.
3. Insert new UltraHEPA® and Pleated Pre-Filters, then insert the bottom of the inlet grill first and then snap the upper part of the front cover back into position.
4. To close the front cover, first make sure the bottom hooks are properly in place before snapping it up to its upright and locked position.



# TROUBLESHOOTING

Before contacting our customer service department, please try the following solutions:

PROBLEM	REASON	SOLUTION
<b>Unit won't operate.</b>	ON/OFF button hasn't been pressed.  Unit is unplugged.	Press ON/OFF button.  Plug in unit.
<b>Reduced air flow or poor filtering.</b>	The inlet or outlet grill may be blocked.  The UltraHEPA® or Pleated Pre-Filter may be clogged.  Filters may still be in bags.	Ensure nothing is in front of or on top of the purifier.  Check filters and replace it if necessary. (See instructions on pg. 8).  Remove filters from bags.
<b>The UltraHEPA® or Pleated Pre-Filter light has come on and won't turn off.</b>	The AirDoctor is designed to notify you when it is time to change each filter. These lights indicate that one of the filters needs to be replaced.	First, remove and replace the filter that needs to be changed. Second, press <b>"Filter Reset"</b> to reset the filter life tracker and turn off notification light.

## ONE-YEAR LIMITED WARRANTY

### AIRDOCTOR ONE-YEAR LIMITED WARRANTY

Your AirDoctor air purifier is warranted to be free from defects in materials and workmanship for one year from the original purchase date. Should the product have a defect in materials or workmanship, we will repair or replace it without charge to you (a shipping and processing fee will apply). To obtain service under warranty, simply call our customer service center toll-free at **800.221.2515**.

This warranty does not cover damage caused by accident, misuse or any use other than as intended and described in this product manual, or damage resulting from failure to maintain and clean this product as specified in this product manual. This warranty applies only to the original purchaser of the AirDoctor air purifier. This warranty does not cover the filters.

### AIRDOCTOR PLEATED PRE-FILTER, HEPA FILTER LIMITED WARRANTY

Your AirDoctor particle filter (HEPA) and Pleated Pre-Filter is warranted to be free from defects in material and workmanship for 30 days from the original purchase date. AirDoctor will replace a defective filter at no charge to you and cover any shipping charges. The limited warranty covers normal use only.

**ALL EXPRESS AND IMPLIED WARRANTIES FOR THIS PRODUCT, INCLUDING IMPLIED WARRANTIES OF MERCHANTABILITY AND FITNESS FOR A PARTICULAR PURPOSE, ARE LIMITED IN DURATION TO THE WARRANTY PERIOD, AND NO WARRANTIES, WHETHER EXPRESS OR IMPLIED, WILL APPLY AFTER THIS PERIOD.**

Some states do not allow limitations on the duration of implied warranties, so the above limitation may not apply to you. While this warranty gives you specific legal rights, you may also have other rights which may vary from state to state.

### CONTACT INFO FOR WARRANTY SERVICE:

AirDoctor  
 P.O. Box 9169 | Van Nuys, CA | 91409-8291  
 800.221.2515 | [info@airdoctorpro.com](mailto:info@airdoctorpro.com)  
 Register your AirDoctor at [airdoctorpro.com/warranty](http://airdoctorpro.com/warranty)  
 ©2021 AirDoctor, LLC. All Rights Reserved.

## ARBITRATION AGREEMENT

**PLEASE READ THIS AGREEMENT CAREFULLY. YOU ACCEPT THE TERMS OF THIS AGREEMENT BY RETAINING THE PRODUCT(S) SHIPPED IN CONNECTION WITH THIS AGREEMENT (THE "PRODUCTS") FOR MORE THAN THIRTY (30) DAYS AFTER RECEIPT. IF YOU DO NOT AGREE TO THE TERMS OF THIS AGREEMENT, YOU MAY RETURN THE PRODUCT TO COMPANY WITHIN THIRTY (30) DAYS OF RECEIPT FOR A FULL REFUND.**

**THIS ARBITRATION AGREEMENT ("AGREEMENT") AFFECTS YOUR LEGAL RIGHTS AND REMEDIES BY PROVIDING THAT DISPUTES BETWEEN YOU AND THE MANUFACTURER, DISTRIBUTOR AND/OR SELLER OF THIS PRODUCT (COLLECTIVELY, "COMPANY"), MUST BE RESOLVED THROUGH BINDING ARBITRATION AND NOT IN COURT. IT ALSO PROVIDES THAT ANY DISPUTE CANNOT BE RESOLVED IN A CLASS ACTION OR OTHER PROCEEDING WHERE YOU REPRESENT OTHER PERSONS OR OTHER PERSONS REPRESENT YOU, AND THAT NO CLASS OR REPRESENTATIVE ARBITRATIONS ARE PERMITTED. PLEASE CAREFULLY READ ALL TERMS IN THIS AGREEMENT.**

- 1. RESOLUTION OF CLAIMS OR DISPUTES.** Any claim or dispute between you and Company (or any of Company's subsidiaries or affiliates) arising out of or relating in any way to the Product or this Agreement shall be resolved through final, binding arbitration. This arbitration obligation is reciprocally binding on both you and the Company and applies regardless of whether the claim or dispute involves a tort, fraud, misrepresentation, product liability, negligence, violation of a statute, or any other legal theory. Both you and Company specifically acknowledge and agree that you waive your right to bring a lawsuit based on such claims or disputes and to have such lawsuit resolved by a judge or jury.
- 2. LIMITATION OF LEGAL REMEDIES.** All arbitrations under this Agreement shall be conducted on an individual (and not a class-wide) basis, and an arbitrator shall have no authority to award class-wide relief. You acknowledge and agree that this Agreement specifically prohibits you and the Company from commencing arbitration proceedings as a representative of others or joining in any arbitration proceedings brought by any other person. The parties agree that no class or representative actions of any type are permitted.
- 3. ARBITRATION PROCEDURES.**
  - a. Before instituting an arbitration, if you have any dispute, we strongly encourage you to contact the Company to try to resolve the matter by calling 800-218-3560, although you are not required to do so.
  - b. The arbitration of any claim or dispute under this Agreement shall be conducted in accordance with the expedited procedures set forth in the JAMS Comprehensive Arbitration Rules and Procedures as those Rules exist on the date you receive the Product, including Rules 16.1 and 16.2 of those Rules. These rules and procedures are available by calling JAMS or by visiting its web site at [www.jamsadr.com](http://www.jamsadr.com). The arbitration of any claim or dispute under this Agreement shall be conducted by an arbitrator who has at least five years of experience conducting arbitrations.
  - c. The arbitration of any claim or dispute under this Agreement shall be conducted in the State of California or the location in which you received this Agreement. For claims of \$10,000 or less, you may choose whether the arbitration proceeds in person, by telephone, or based only on submissions.
  - d. The Company shall pay costs for the arbitration of claims, including any JAMS Case Management Fee and all professional fees for the arbitrator's services. The Company shall pay the fees and costs of its own counsel, experts and witnesses and shall not be able to recoup them from you even if you do not prevail in the arbitration. Unless otherwise provided by law, you acknowledge and agree that you shall pay the fees and costs of your own counsel, experts and witnesses.
- 4. CHOICE OF LAW.** The arbitration provisions of this Agreement and any arbitration conducted pursuant to the terms of this Agreement shall be governed by the Federal Arbitration Act (9 U.S.C. Secs. 1-16). In this respect, the parties acknowledge that this Agreement involves a transaction conducted in interstate commerce. Otherwise, this Agreement and the rights of the parties hereunder shall be governed by and construed in accordance with the laws of the State of California, exclusive of conflict or choice of law rules.
- 5. SEVERABILITY.** If any provision of this Agreement is declared or found to be unlawful, unenforceable or void, such provision will be ineffective only to the extent that it is found unlawful, unenforceable or void, and the remainder of the provision and all other provisions shall remain fully enforceable.

AD5000H

AD5000H

**AIRDoctor**

